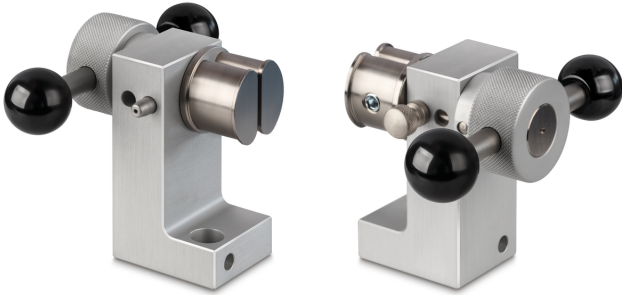


KERN AD 9250

KERN

Belt tension clamp



Category

Brand	Sauter
Product category	Clamp
Product group	Roller tension clamp

Construction

Dimensions completely mounted (W×D×H)	105×91×80 mm
Material	steel
Mounting - force dissipation	Threaded hole M6 External thread M12
Tensile/compressive force [Max]	10 kN
Maximum clamp width	25 mm
Clamping width	2,5 mm

Environmental conditions

Storage temperature [Min]	-10 °C
Storage temperature [Max]	40 °C

Packing & Shipping

Readability force [d] (N)	14 d
Dimensions packaging (W×D×H)	105×91×80 mm
Net weight	1,5 kg
Shipping method	Parcel service
Net weight approx.	1,6 kg
Gross weight approx.	1,6 kg
Shipping weight	1,5 kg

Pictograms